



PNAIRP



# PNAIRP News

July, 2006

Volume 2, Issue 1

## In This Issue

- ? 2006 Conference
- ? Introductions to New Board Members
- ? From the Secretary – Membership Update
- ? Meet a Member **Neal Christopherson, Whitman College**

What's your source?  
[Links for Higher Education Data](#)

Professional Grants  
[More information](#)

Update  
[Carol Runge \(Young\)](#)

New Member Spotlight  
[Kim Rambo, Oregon University System](#)

Logo

## Contact Us

David Burgess

Editor & member-at-large

[burgessd@pdx.edu](mailto:burgessd@pdx.edu)

## Greetings from the PNAIRP President



Hello PNAIRPers,

On behalf of the Executive Committee, we hope this letter reaches you in good health and cheer. It is hard to believe that summer is halfway over and that another fall term will soon be here.

I would like to start by thanking two out-going members of the board for all their contributions and their willingness to share their talents and

time; Nina Oman, President and Gary Beach, Member-at-Large (MAL). As a member of the Executive, Nina did a wonderful job organizing a very successful conference in Portland in 2003. As MAL, Gary has been a reliable source for leading discussions during the last few conferences. He also filled in for the Vice President and represented the Executive at the 2004 AIR national conference. So, thank you Gary and Nina for your work and service to the membership!

In this edition of the newsletter you will find more information about the upcoming conference to be held in Oregon in October. Please consider joining us in the foothills of Mt. Hood and, through your participation, making this year's conference as successful and memorable as those of recent years in Seattle and Kelowna. This year's conference theme is building upon that of last year. The keynote speaker, Dr. Frank Abou-Sayf, will offer a valuable follow-up and extension to Dr. Richard Howard's address in Seattle.

In August, the PNAIRP nominating committee will be working hard to develop a slate of candidates for the positions of vice president, secretary, and member-at-large (2 positions). Please consider nominating your colleagues or yourself for these positions. Serving on the Executive Committee is a great way to get involved in the organization, meet new colleagues from across the region, and have some fun. (Really!) Also, don't forget to vote during the election in September.

Enjoy the rest of your summer and keep on "IR-ing"! (Inside joke. Read the article, "Meet a Member".) I am looking forward to seeing all of you this Fall on the Mountain.

## Juliette Stoering

PNAIRP President

---

## Conference 2006

Planning is in full-swing for the 27th Annual Conference. This year's theme is **Beyond Data: Collaborative and Integrated Approaches for Organizational Learning**. This year plenary speaker will be Frank Abou-Sayf PhD. of [Kapiolani Community College](#), Hawaii. Dr. Abou-Sayf has worked as a local and international consultant in evaluation, training, and assignments requiring quantitative solutions for such organizations as the World Bank and the United States Agency for International Development. He is currently Director of Planning and Institutional Research at Kapiolani College and has recently been appointed Interim Dean of the Business Division. He is also an instructor of Quantitative Methods in the College of Business Administration at the University of Hawaii, Manoa campus. Dr. Abou-Sayf is the author of 29 peer-reviewed publications, and 27 meeting and conference presentations. He is an Associate Editor of the Journal of Applied Research in the Community College.



The conference will be held in Welches, Oregon at The Resort at The Mountain (<http://www.theresort.com/>) from Wednesday, October 25 through Friday, October 27. Welches is located one hour east of Portland in the foothills of Mt. Hood. The conference facilities will be a marked contrast to downtown Seattle, site of the 2005 conference, offering an intimate setting for professional development and networking. The resort is surrounded by Mt. Hood National forest, which offers a multitude of recreational and nature activities. Consider arriving early or staying an extra day and make a trip up to the historic [Timberline Lodge](#), a classic heavy-timber mountain lodge high on the slopes of Mount Hood, or try golfing, croquet or lawn bowling all located at the Resort. The PNAIRP executive committee has negotiated great room rates for the conference starting at \$89 per night for either the *Resort Room* or the *Deluxe Queen*. The Resort is holding a block of rooms for PNAIRP members. To make reservations contact the reservations department by phone and identify yourself with the "PNAIRP Annual Conference" in order to receive the agreed-upon rate and room type. Please note the cut-off date for telephone reservations is September 29, 2006. The direct line to the reservations department is (503) 622-3101. Individuals calling from outside the Portland dialing area may use (800) 669-7666. Rates and availability are not guaranteed after the cut-off date of September 29, 2006.

Vice President, Karen Grigoleit ([Kgrigoleit@tru.ca](mailto:Kgrigoleit@tru.ca)) is responsible for the program. If you missed the call for proposals and you want to present a paper or demonstration contact Karen as she may be able to make accommodations for you on the schedule. Information about conference registration and the conference program will be posted at the PNAIRP website as soon as it is available. [Back](#)

---

## Introductions to New Board Members

### Karen Grigoleit - Vice President



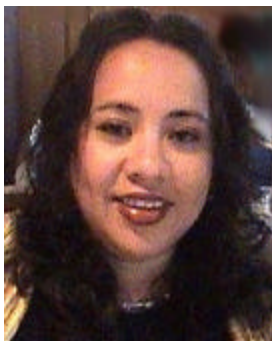
Instructional Liaison Manager, [Thompson Rivers University](#), Kamloops, BC.

First as a Member-at-Large and now as the Vice-President on the PNAIRP Executive Committee, Karen is honored to continue serving the membership of this supportive organization. Karen began her career in Institutional Research and her membership in PNAIRP in 1998. Since then, she has had the opportunity to experience a diverse range of institutions as a Research Analyst: two and four-year institutions; rural and urban institutions; and even working both sides of the border!

All of this moving has kept her one step ahead of the law. Her current position as Instructional Liaison Manager allows her to apply her analyst skills to different projects and data analyses.

When she's not at work, Karen likes to relax by biking, hiking, and trying new recipes out on family and friends, fully complemented by the appropriate selection of beer or wine, of course! While she has not been able to cook for her fellow PNAIRPers yet, she is always committed to socializing at every conference, even if it means leading trusting colleagues along a more 'scenic route' to their destination.

### Dorys Crespin-Mueller - Member-at-Large



Research Analyst, [Thompson Rivers University](#), Kamloops, BC.

Originally from El Salvador, Dorys has been a Canadian since 1991. Dorys holds a BA in Sociology and an MBA in Educational Administration. After an initial venture in journalism, she joined Thompson Rivers University (or the University College of the Cariboo as it was then) in 1997 as an International Student Advisor, but soon gravitated to Institutional Research, where she has served as a Research Analyst for the last seven years. Dorys is also a

member of the BC Institutional Research and Planning Association (BCIRP), the Kamloops Aurora Centennial Rotary Club and serves on the board of CFBX, the Thompson Rivers campus and community radio station.

## [Introductions cont.](#)

### **Ron Smith - Member-at-Large**

Research Evaluation Coordinator, [Portland Community College](#), Portland, OR.

Ron received a BA in Psychology (1976) and a MSA in Public Administration (1987) from Southeast Missouri State University. He went on to earn a PhD in Higher Education from Southern Illinois University in 1996.

Before coming to PCC, Ron was the Research Analyst with the Center for Basic Skills at Southern Illinois University.

Ron is a member of the Association for Institutional Research and the Oregon Consortium of Community College Institutional Researchers.

Welcome to all the new board members and thank you for your time and talents! [Back](#)

---

## What's your source?

### Canada

The Canadian Education Statistics Council (CESC) offers valuable information and insight about education in Canada both at the national and at the provincial and territorial level. Data on enrollment, employment numbers and completion rates are just a few of the subjects covered. Much of the data is offered in the format of Excel files making them easy to download and use. No login/password is necessary; to access the site just go to <http://www.statcan.ca/english/freepub/81-582-XIE/2006001/figures.htm>

### USA

The National Center for Education Statistics (NCES) is a great place to find national norms for price of attendance, faculty salary and benefits, enrollment demographics and much more. NCES utilizes various sources for the data including the Integrated Postsecondary Education Data System (IPEDS), National Postsecondary Student Aid Study, and the Digest of Education Statistics to name a few. The best feature of this website is that it is current information; data from 2004 and 2005 is available. There are over 300 tables available for 2004 alone! No login/password is necessary to access the site; just go to <http://nces.ed.gov/quicktables/index.asp>

***(If you know of any links that you find helpful for IR work share them with us by sending them to the editor) [Back](#)***

---

## Meet a Member

### Neal Christopherson



Assistant Director of Institutional Research,  
Whitman College

Neal is the Assistant Director of Institutional Research at Whitman College but describes his position as “more of a one person shop.” As he explains it, “The Director of IR is also the Registrar, and he spends 98% of his time Registrar-ing, and lets me take care of all the IR-ing.” His job duties include conducting student surveys and writing reports based on the results;

keeping track of enrollments, enrollment projections, graduation rates, etc.; and answering ad-hoc requests for data from people around campus, including the Deans, Vice-Presidents, and the President. A large part of performing these duties involves maintaining databases, running queries, and merging and manipulating multiple datasets. As Whitman’s re-accreditation approaches in October, 2007, Neal finds himself spending his time helping with the self-study. In addition to his responsibilities in IR,

Neal is a statistics instructor for the Sociology Department and an assistant coach with the cross-country team.

#### Neal’s List of Favorites

Movie: Star Wars, (he explains this by “being a young boy” in the seventies)

Record: The Joshua Tree, U2

Band: Sufjan Stevens

Food: Pizza

Politician: FDR

Era: 1946-1965

Color: Blue

Sport: Soccer and distance running

Foreign Country: England

Depart. to work with: Registrar’s Office

Drink: “unnaturally blue” Gatorade

Writer: Kurt Vonnegut

Flower: Tulip

Lucky number: 7

One of Neal’s favorite things about his job is working with data and running analyses to answer questions. Another aspect of his job that he greatly appreciates is the location: “...my job is in Walla Walla. It’s a great place to live, Whitman is a great school full of great people, and it only takes me 8 minutes to walk to work.” The part of his job that Neal finds most difficult is working in the summer: “Even though it’s the most relaxed time of year, and I have more freedom in my research projects, it’s tough to sit in my office all day when it’s nice outside.”

Neal grew up in Redlands, California, about 60 miles east of Los Angeles.

Although he spent a few weeks visiting relatives in the Pacific Northwest every summer growing up, moving to Walla Walla six years ago was his first experience living here.

Neal earned his BA in Philosophy from Wheaton College, Illinois in 1995 and went to the University of Notre Dame for graduate school in Sociology, finishing his MA in 1997 and PhD in 2000. While he was in graduate school, he worked in the Institutional Research office for two summers. When his wife was hired as a professor at Whitman for the 2000-01 academic year, Neal wasn’t sure at first what he was going to do. Fortunately, the IR position became available before they moved to Walla Walla, and Neal was happy to accept the job offer.

## [Christopherson cont.](#)

When he's not in the IR office, Neal is busy at home with his two-year old son. He also stays active by running, biking, and playing soccer regularly. He rode in the Seattle to Portland bike ride for the first time this July. His other interests include playing music on piano and guitar, reading books—mostly fiction; and playing card games. Neal's favorite sports team is the US men's national soccer team. He has been a passionate fan since he was a kid. He follows the team pretty closely and watches any games that are on TV. Neal likes other sports teams as well, but as he puts it: "I'm not quite as obsessive about them". [Back](#)

---

## Professional Development Opportunities

PNAIRP offers a variety of professional development and travel grant opportunities throughout the year. If the cost of traveling to a conference is prohibiting you from attending, please do not hesitate to apply for a grant. More information about deadlines and criteria and past award recipients can be found at the PNAIRP Web-site. Please contact Member-at-large, Dorys Crespin-Mueller ([dcrespin@tru.ca](mailto:dcrespin@tru.ca)) if you have any questions or would like to submit an application.

[Back](#)

---

## Where did you go?

Every now and then you find yourself wondering "what happened to so-and-so?"... Well, I have the answer for you! Carol Runge (who you may know as Carol Young), formerly a research analyst at Portland Community College is, to use a Neal Christopherson term, "IR-ing" (see above) as the Director of Institutional Research and Planning at [Cayuga Community College](#) in Auburn, New York. In this role, Carol focuses on "developing strategic plan indicators, conducting the usual suspect surveys and organizing enrollment data for the college-wide Assessment Day, where faculty request data—an impressive accomplishment for the College!"

Carol sends her greetings and says that she holds fond memories toward the association and its members. "My first PNAIRP memories include Dr. Flora Yen's mad dash into a Vancouver, BC bank to acquire Canadian dollars when we traveled to the 1996 PNAIRP conference held in beautiful Whistler and meeting all of the Portland State University IR people in a *shady, dimly lit* room to assemble PNAIRP conference packets."

For Carol PNAIRP provided important opportunities to connect with others and to keep current with statistical methodology and software.

## [Where did you go cont.](#)

She also valued “Pacific Northwest institutional researchers’ progressive outlook regarding topics such as:

- ? Developing an understanding of students who attend multiple colleges.
- ? Reporting effectiveness indicators including increasing the visibility of transfer students’ success at four-year state colleges and retention rates.
- ? Designing program and certificate planning for working professionals such as Portland State University’s Human Resources certificate and promoting the advantages of a community college education”

Carol also offered an invitation for those, if ever nearby, to please do not hesitate to get in touch. Carol can be reached at [runge@cayuga-cc.edu](mailto:runge@cayuga-cc.edu)

Well, now you know. Thanks Carol, best wishes to you! *Back*

---

## New Member Spotlight

### Kim Rambo



Performance Analyst, Department of Strategic Programs & Planning, [Oregon University System](#) (OUS).

As a performance analyst, Kim assists in the collection, analysis and presentation of national, system and campus performance measurement data for the seven schools in the OUS system. She also provides support for the development, design, administration, and analysis of surveys in support of the State Board of Higher Education’s strategic planning and performance goals.

Kim is new to the IR field coming from Eastern Oregon University where she was an Admissions Counselor and International Student Advisor. Prior to Eastern, Kim worked at the University of Oregon for two years as a Graduate Teaching Fellow while completing a Master’s degree in Public Administration. It was at the University of Oregon where Kim’s interest in performance measurements was first sparked eventually leading her to the completion of the Oregon Performance Internship program.

## New Member Cont.

As a performance analyst, Kim values the opportunity to collect, interpret and analyze data that can potentially help improve higher education in Oregon. Of the projects she involved with she finds the Survey of OUS Bachelor's Degree Recipients, a survey that evaluates educational experience of graduates one year after receiving their diplomas, to be her most interesting project. Her least favorite thing at work is sitting at her desk on bright sunny days! Kim's professional goals are in-line with her current work, "I am very interested in higher education and workforce development. I would like to continue advancing my career within higher education learning outcomes and performance measurement. As I continue to grow professionally, I would like to determine some way to align my skill strengths with my desire to educate and inspire others."

### Kim's List of Favorites

Movie: Shakespeare in Love  
Entertainer: Sheryl Crow  
Food: Tacos!  
Era: World War II  
Color: Blue  
Sport: Volleyball  
Department to work with:  
The (OUS) IR office, of course.  
Country, other than own: Italy  
Drink: Coffee

If she could have a personnel mascot what would it be: Panther

Kim is a native Oregonian who was born and raised in La Grande, a town 250 miles east of Portland located in the shadows of the beautiful Blue Mountains. La Grande is also the home of Eastern Oregon University where Kim earned a BS in Business/Economics (Honors). Kim has a succinct one-word description of how she sees La Grande and that is "home". Kim's other interest include running, knitting, working in the garden and baking.

Welcome to PNAIRP, Kim! [Back](#)

---

## PNAIRP Logo Contest

You may have noticed the new logo at the top of the newsletter. The new PNAIRP logo was chosen at the conclusion of the 2005 conference at the annual business meeting by a unanimous vote of members present. We had no entries for the contest but we stumbled upon the logo by adapting work done by Stephanie Barclay-Mckeown for the 2005 conference in Kelowna. The logo will be used for the Website, newsletter, and letterhead. [Back](#)



---

## Membership Update

As of July 2006, PNAIRP consisted of 119 members representing WA (n = 54), BC (n = 25), OR (n = 33), ID (n = 7) and one member from OH. PNAIRP also includes 38 members from 2005 who have not yet renewed their membership for 2006. If you think you might fall into this category, please contact the PNAIRP secretary, Patty James at [pjames@highline.edu](mailto:pjames@highline.edu) to update your membership status. The Executive Board values your membership and wants to stay in contact with you, so please renew your membership ASAP. Also, if you know of any newcomers to our region, please let the secretary know so that she can send them information about the organization. *Back*